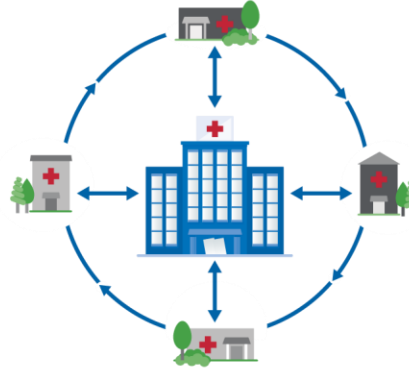




In Indiana and around the world, people are not getting access to the specialty care they need, when they need it, for complex and treatable conditions, such as opioid use disorder.

## Moving Knowledge, Not Patients

Through technology-enabled collaborative learning, ECHO creates access to high-quality specialty care in local communities.



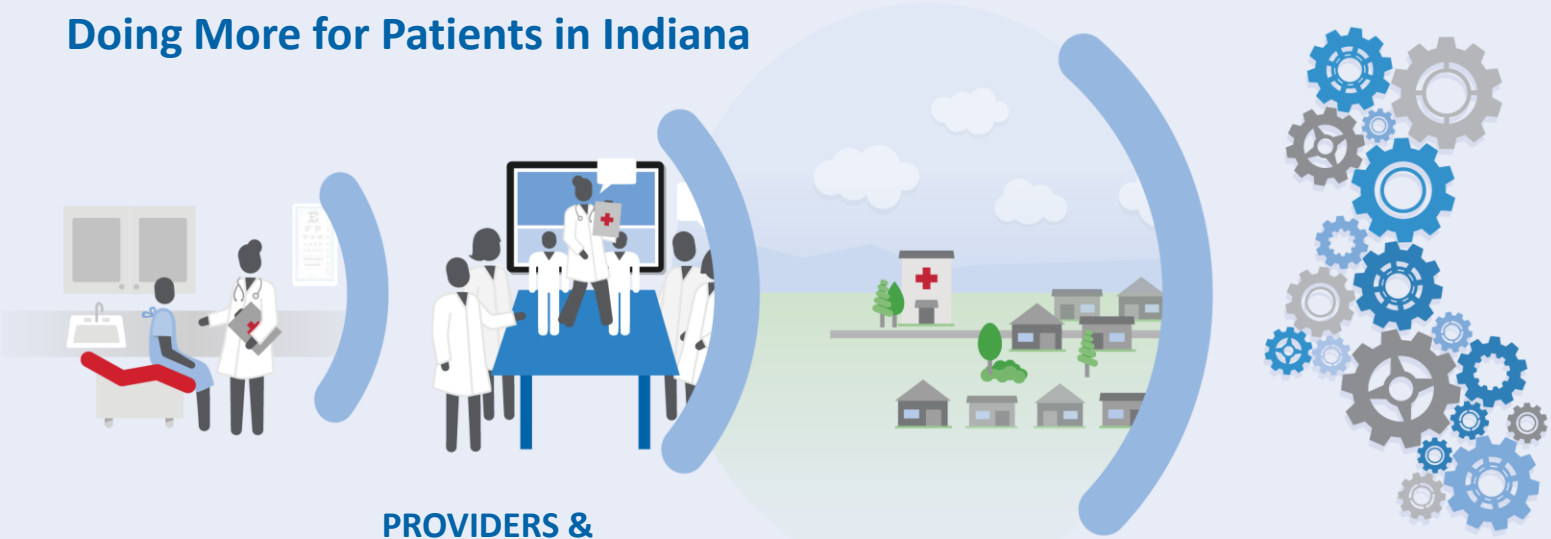
Hub and spoke knowledge-sharing networks create a learning loop:

**Community providers learn from specialists.**

**Community providers learn from each other.**

**Specialists learn from community providers as best practices emerge.**

## Doing More for Patients in Indiana



### PATIENTS

- Right Care
- Right Place
- Right Time

### PROVIDERS & COMMUNITY HEALTH WORKERS

- Acquire New Knowledge
- Treat More Patients
- Build Community of Practice

### COMMUNITY

- Reduce Disparities
- Retain Providers
- Keep Patients Local

### SYSTEM

- Increase Access
- Improve Quality
- Reduce Cost

## Changing the World, Fast



### INDIANA

- Join the OUD ECHO at Indiana University School of Medicine.
- No cost CME credits will be provided



### NATIONAL

- Operating in 30 states and growing
- 45 complex conditions



### GLOBAL

- Operating 86 hubs in more than 13 countries and growing
- Goal of touching 1 billion lives by 2025

Are you a part of the ECHO?

[Oudecho.iu.edu](http://Oudecho.iu.edu)